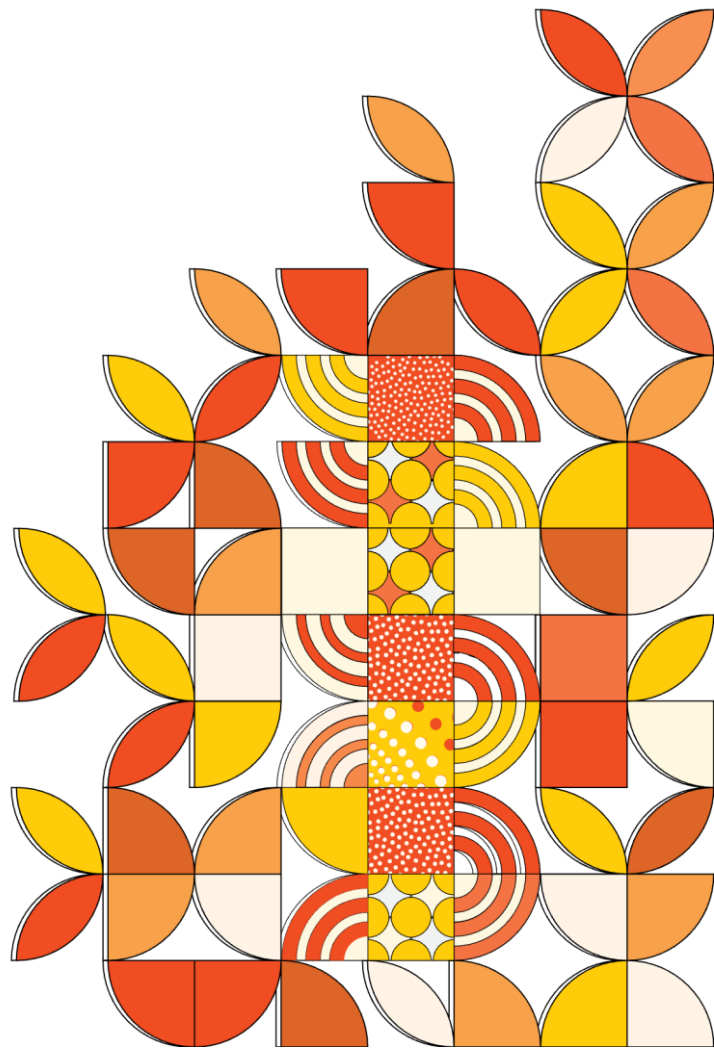


Graduate Certificate in Advance Nursing

Fee Help



Graduate Certificate in Advanced Nursing		July 24 Intake	
UNITS	Unit Start Date	Unit Census date	Credit Points
Professional Issues and Policies	08-Jul-24	13-Aug-24	12
N8004 Critical Care Nursing	02-Sep-24	27-Sep-24	12
N8005 Professional Reflection in Critical Care Nursing	02-Sep-24	27-Sep-24	8
			32
Professional Issues and Policies	08-Jul-24	13-Aug-24	12
N8006 Acute Care Nursing	02-Sep-24	27-Sep-24	12
N8007 Professional Reflection in Acute Care Nursing	02-Sep-24	27-Sep-24	8
			32
Professional Issues and Policies	08-Jul-24	13-Aug-24	12
N8008 Emergency Nursing	02-Sep-24	27-Sep-24	12
N8009 Professional Reflection in Emergency Nursing	02-Sep-24	27-Sep-24	8
			32
Professional Issues and Policies	08-Jul-24	13-Aug-24	12
N8010 Neonatal Nursing	02-Sep-24	27-Sep-24	12
N8011 Professional Reflection in Neonatal Nursing	02-Sep-24	27-Sep-24	8
			32
Professional Issues and Policies	08-Jul-24	13-Aug-24	12
N8012 Paediatric Nursing	02-Sep-24	27-Sep-24	12
N8013 Professional Reflection in Paediatric Nursing	02-Sep-24	27-Sep-24	8
			32
Professional Issues and Policies	08-Jul-24	13-Aug-24	12
N8014 Mental Health Nursing	02-Sep-24	27-Sep-24	12
N8015 Professional Reflection in Mental Health Nursing	02-Sep-24	27-Sep-24	8
			32
Professional Issues and Policies	08-Jul-24	13-Aug-24	12
N8016 Gerontology Nursing	02-Sep-24	27-Sep-24	12
N8017 Professional Reflection in Gerontology Nursing	02-Sep-24	27-Sep-24	8
			32

Professional Issues and Policies	08-Jul-24	13-Aug-24	12
N8018 Orthopaedic Nursing	02-Sep-24	27-Sep-24	12
N8019 Professional Reflection in Orthopaedic Nursing	02-Sep-24	27-Sep-24	8
			32
Professional Issues and Policies	08-Jul-24	13-Aug-24	12
N8020 Diabetes Nursing	02-Sep-24	27-Sep-24	12
N8021 Professional Reflection in Diabetes Nursing	02-Sep-24	27-Sep-24	8
			32
Professional Issues and Policies	08-Jul-24	13-Aug-24	12
N8022 Palliative Care Nursing	02-Sep-24	27-Sep-24	12
N8023 Professional Reflection in Palliative Nursing	02-Sep-24	27-Sep-24	8
			32
Professional Issues and Policies	08-Jul-24	13-Aug-24	12
N8024 Perioperative Nursing	02-Sep-24	27-Sep-24	12
N8025 Professional Reflection in Perioperative Nursing	02-Sep-24	27-Sep-24	8
			32
Professional Issues and Policies	08-Jul-24	13-Aug-24	12
N8026 Renal Nursing	02-Sep-24	27-Sep-24	12
N8027 Professional Reflection in Renal Nursing	02-Sep-24	27-Sep-24	8
			32

Graduate Certificate in Advanced Nursing		November 24 Intake	
UNITS	Unit Start Date	Unit Census date	Credit Points
Professional Issues and Policies	11-Nov-24	16-Dec-24	12
N8004 Critical Care Nursing	06-Jan-25	30-Jan-25	12
N8005 Professional Reflection in Critical Care Nursing	06-Jan-25	30-Jan-25	8
			32
Professional Issues and Policies	11-Nov-24	16-Dec-24	12
N8006 Acute Care Nursing	06-Jan-25	30-Jan-25	12
N8007 Professional Reflection in Acute Care Nursing	06-Jan-25	30-Jan-25	8
			32
Professional Issues and Policies	11-Nov-24	16-Dec-24	12
N8008 Emergency Nursing	06-Jan-25	30-Jan-25	12
N8009 Professional Reflection in Emergency Nursing	06-Jan-25	30-Jan-25	8
			32
Professional Issues and Policies	11-Nov-24	16-Dec-24	12
N8010 Neonatal Nursing	06-Jan-25	30-Jan-25	12
N8011 Professional Reflection in Neonatal Nursing	06-Jan-25	30-Jan-25	8
			32
Professional Issues and Policies	11-Nov-24	16-Dec-24	12
N8012 Paediatric Nursing	06-Jan-25	30-Jan-25	12
N8013 Professional Reflection in Paediatric Nursing	06-Jan-25	30-Jan-25	8
			32
Professional Issues and Policies	11-Nov-24	16-Dec-24	12
N8014 Mental Health Nursing	06-Jan-25	30-Jan-25	12
N8015 Professional Reflection in Mental Health Nursing	06-Jan-25	30-Jan-25	8
			32
Professional Issues and Policies	11-Nov-24	16-Dec-24	12
N8016 Gerontology Nursing	06-Jan-25	30-Jan-25	12
N8017 Professional Reflection in Gerontology Nursing	06-Jan-25	30-Jan-25	8

			32
Professional Issues and Policies	11-Nov-24	16-Dec-24	12
N8018 Orthopaedic Nursing	06-Jan-25	30-Jan-25	12
N8019 Professional Reflection in Orthopaedic Nursing	06-Jan-25	30-Jan-25	8
			32
Professional Issues and Policies	11-Nov-24	16-Dec-24	12
N8020 Diabetes Nursing	06-Jan-25	30-Jan-25	12
N8021 Professional Reflection in Diabetes Nursing	06-Jan-25	30-Jan-25	8
			32
Professional Issues and Policies	11-Nov-24	16-Dec-24	12
N8022 Palliative Care Nursing	06-Jan-25	30-Jan-25	12
N8023 Professional Reflection in Palliative Nursing	06-Jan-25	30-Jan-25	8
			32
Professional Issues and Policies	11-Nov-24	16-Dec-24	12
N8024 Perioperative Nursing	06-Jan-25	30-Jan-25	12
N8025 Professional Reflection in Perioperative Nursing	06-Jan-25	30-Jan-25	8
			32
Professional Issues and Policies	11-Nov-24	16-Dec-24	12
N8026 Renal Nursing	06-Jan-25	30-Jan-25	12
N8027 Professional Reflection in Renal Nursing	06-Jan-25	30-Jan-25	8
			32