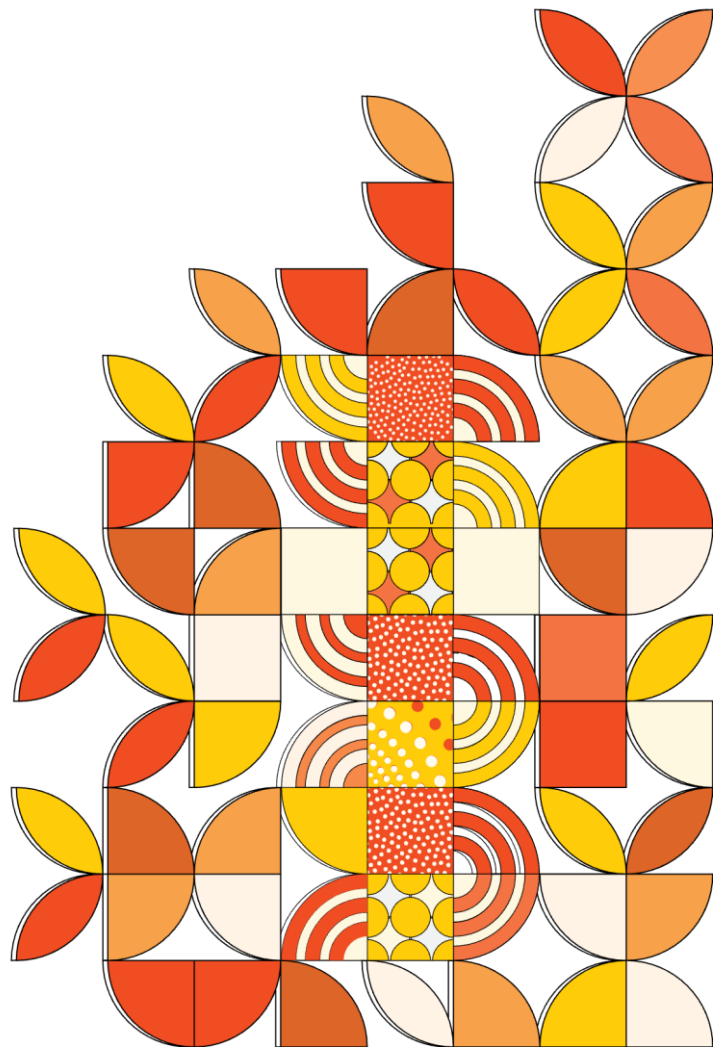


Master of Nursing (On Campus)

FEE HELP



| Master of Nursing (On-campus) | July 24 INTAKE | | |
|---|-----------------------|------------------|---------------|
| Unit | | | |
| Semester 1 | Unit Start Date | Unit Census date | Credit Points |
| N9001 Professional Issues and Policies in Nursing | 8/07/2024 | 13/08/2024 | 12 |
| N9002 Assessment of Complex Health Conditions | 8/07/2024 | 13/08/2024 | 12 |
| N9003 Professional Reflection in Nursing | 8/07/2024 | 13/08/2024 | 8 |

| Master of Nursing (On-campus) | NOV24 INTAKE | | |
|---|---------------------|------------------|---------------|
| Unit | | | |
| Semester 1 | Unit Start Date | Unit Census date | Credit Points |
| N9001 Professional Issues and Policies in Nursing | 11/11/2024 | 17/12/2024 | 12 |
| N9002 Assessment of Complex Health Conditions | 11/11/2024 | 17/12/2024 | 12 |
| N9003 Professional Reflection in Nursing or N9004 Professional Experience Placement | 11/11/2024 | 17/12/2024 | 8 |
| | | | 32 |