



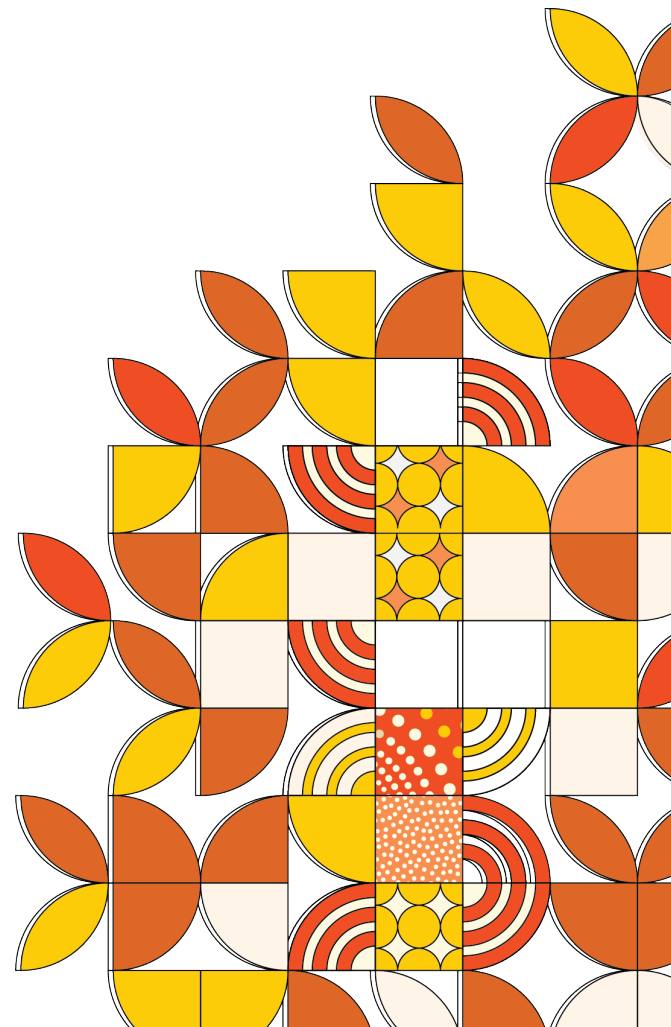
Legal entity: INSTITUTE OF HEALTH & MANAGEMENT PTY LTD.

Category: Institute of Higher Education

CRICOS Provider: 03407G | Provider ID: PRV14040

ABN: 19 155 760 437 | ACN: 155 760 437

Learning and Teaching Policy



SECTION 1

Purpose

1. This policy describes the Institute of Health & Management's (IHM's) principles as stated below.
 - a) Provide a framework, identifying principles for learning and teaching in the Institute of Health & Management (IHM).
 - b) Ensure that high quality underpins all IHM courses and units of study regardless of delivery mode.
 - c) Ensure academic standards are maintained.
 - d) Maximise opportunities for students to enrol in, transition through, and successfully complete their studies.
 - e) Ensure that eLearning is used to enhance learning for students studying face-to-face on-campus, blended and/or online.

Scope

2. This policy applies to:
 - a) All staff (academic and support), students, decision-making and advisory bodies involved in teaching and curriculum relating to IHM accredited courses and non-award offerings.
 - b) To all IHM staff involved in the implementation of courses offered on campus or online.

Suite documents

3. This Policy is linked to the following procedures:
 - a) Learning and Teaching Procedure
 - b) See also the Associated Information listed in the 'Related Internal Documents' in Section 3 below.

SECTION 2

Policy

4. Principles

The IHM Learning and Teaching Policy is underpinned by inspiring and promoting teaching excellence through:

- a) recognising, promoting, and celebrating and teaching excellence.
- b) offering an inclusive and stimulating learning and teaching environment that recognises diversity.
- c) engaging in learner-centred teaching, supporting, and sharing excellent, innovative, and inclusive learning and teaching practices.
- d) integrating learning technologies into educational settings to increase student access and participation and enhance student engagement.
- e) providing students opportunities to participate in governance and offer feedback relating to learning and teaching.

- f) communicating to students the actions taken in response to feedback to ensure continuous improvement.
- g) providing appropriate professional and educational development and practical resources.
- h) supporting critical inquiry into learning and teaching that embeds scholarship into the curriculum and learning and teaching engagement activities.
- i) maximising learning opportunities for students to develop knowledge, skills and personal values through active learning and real-world experiences.
- j) promote the nexus between teaching, scholarship, and evidence-based practice.
- k) support continuous review and improvement of all aspects of teaching.

5. **Operational principles**

IHM will ensure that:

- a) Learning and teaching is informed by international good practice, disciplinary and interdisciplinary knowledge and skills that situate IHM's students as future-focused global citizens.
- b) IHM's established threshold standards for learning and teaching are subject to regular review and benchmarking by Academic Board and the Board of Directors.
- c) IHM's learning and teaching standards will satisfy or exceed relevant statutory and professional regulatory frameworks.
- d) Student engagement and learning is enhanced through learning design, pedagogy (including online learning pedagogy), use of technology and aligned assessment strategies.

6. **Relating to implementation IHM will ensure:**

- a) A learner-centric approach informed by principles of adult learning underpin learning and teaching at IHM.
- b) Courses are designed to enhance career opportunities for students.
- c) IHM recognises that all students bring relevant knowledge, skills, and attitudes to their learning experiences. This prior knowledge is recognised and built upon by teachers.
- d) A variety of learning and teaching methodologies complement different learning styles and the content of various courses.
- e) A community of enquiry is sustained that exemplifies freedom of thought, expression, and mutual respect.
- f) Consistent, comparable, equitable curricula delivery and student learning experiences maintained across all campuses.
- g) All staff are supported in their teaching and practice.
- h) All students are supported in their learning.
- i) All units of study are effectively designed and delivered resulting in high quality courses.
- j) IHM supports teacher enquiry into the scholarship of learning and teaching.

- k) IHM supports ongoing professional and academic development of staff.
- l) Information literacy is a key graduate attribute and is promoted through all aspects of teaching and
- m) student support.
- n) Gaining research skills such as library database searching, and evaluation of sources and research
- o) methodologies will enable students to engage critically and effectively into whatever matter they wish to pursue.

SECTION 5

Associated Information

Related Internal Documents	
	<ul style="list-style-type: none"> • Learning and Teaching Procedure • Academic Honesty and Integrity Policy • Academic Honesty and Integrity Procedure • Accessibility Policy • Accessibility Procedure • Access and Equity Policy • Access and Equity Procedure • Copyright Policy for Students • Copyright Procedure for Students • Copyright Policy for Staff • Copyright Procedure for Staff • Staff Recruitment, Selection and Appointment Policy • Staff Recruitment, Selection and Appointment Procedure • Student Support and Advocacy Service Policy • Student Support and Advocacy Service Procedure • Student Assessment Policy • Student Assessment Procedure • Student Complaints and Appeals Policy • Student Complaints and Appeals Procedure • Student Misconduct Policy • Student Misconduct Procedure • Student Academic Progression Policy • Student Academic Progression Procedure • Staff Professional Development Policy • Staff Professional Development Procedure • Student Selection and Admission Policy • Student Selection and Admission Procedure • Assessment Policy

	<ul style="list-style-type: none"> • Assessment Procedure • Course Design Policy • Course Design Procedure
Related Legislation, Standards, and Codes	<ul style="list-style-type: none"> • Tertiary Education and Quality Standards Agency Act 2011 • Higher Education Standards Framework (Threshold Standards) 2021 • TEQSA Guidance Notes: • Education Services for Overseas Students Act 2000 • National Code of Practice for Providers of Education and Training to Overseas Students 2018 • Australian Nursing and Midwifery Accreditation Council • Disability Standards for Education 2005
Date Approved	31/03/2021
Date Endorsed	14/04/2021
Date of Effect	14/04/2021
Date of Next Review	31/07/2024
Approval Authority	Academic Board (endorsed by Board of Directors)
Responsibility for implementation	Academic Dean
Document Custodian	Academic Dean or Chair, Learning and Teaching Committee
IHM Doc ID	IHM-LTP1 – 2.1

Change History

Version Control		Version 2
Change Summary	Date	Short description of change, including version number, changes, who considered, approved, etc
	15/03/2021 Version 2	<ul style="list-style-type: none"> • Policy and Procedure are separated into two documents • Added version number, Added definitions • Minor editorial changes • Version 2 approved by Academic Board in March 2021
	22/11/2023 Version 2.1	<ul style="list-style-type: none"> • The definitions have been relocated to the IHM glossary and the template has been updated.